

## Safety valve 4174

- Male thread 1/2" × female 1/2"
- Opening pressure 3–4 bar
- High-lifting
- CE approved



### Description

Safety valve.

### Construction

Safety valve in brass with diaphragm in EPDM. Connection male thread 1/2" and female thread 1/2". Key grip. Supplied with preset, non-adjustable opening pressure.

### Marking

DN, flow direction arrow on body.  
CE and opening pressure on cap.

### Approval

CE, EN 1491.

### Maintenance

The safety valve is normally maintenance-free, but should be inspected for correct operation twice a year.

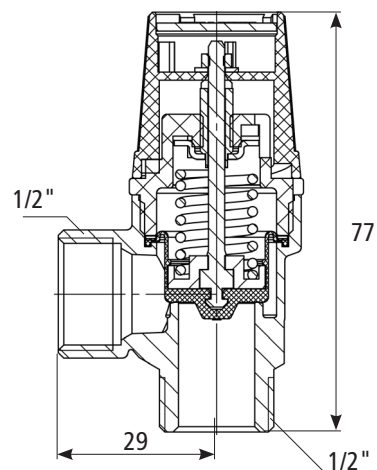
### Installation

The safety valve must be installed according to regulations.

### Technical data

Body Brass CW617N  
Diaphragm EPDM

Maximum working pressure: 10 bar  
Maximum working temperature: +120°C  
Minimum working temperature: +2°C  
Opening pressure: see chart.



Item number	Description	Connection	Opening pressure (bar)	Weight (kg per piece)
0741740300	Safety valve 4174, 1/2" M × 1/2" F, 3 bar	1/2" M × 1/2" F	3,0	0,12
0741740400	Safety valve 4174, 1/2" M × 1/2" F, 4 bar	1/2" M × 1/2" F	4,0	0,12

All dimensions in millimetres

Subject to technical changes and corrections without notice