

# Cooling connection 1"- 1¼"

- Male thread 1"- 1¼"
- Check valve



## Description

Filling group.

## Construction

Filling group in brass with ball valves for shutting off circulation loop. Soft closing check valve. Connection male thread 1"- 1 ¼"

Ball valves for draining/filling with built-in strainer for shutting off fill and drain lines.

## Marking

DN, PN and flow direction arrow.

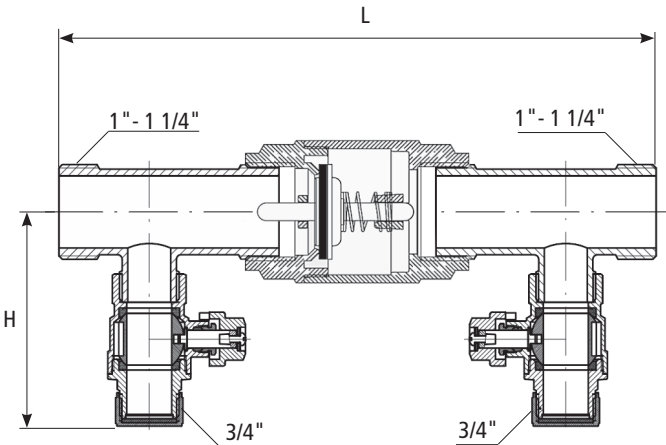
## Maintenance

The ball valves must be operated periodically, two to three times a year.

## Technical data

Body and T-pipes	Brass CW617N
Ball seal	PTFE
Stem gasket	PTFE
Cap seal (gasket)	NBR
Gasket	NBR

Opening pressure check valve: 0,45 - 0,50 bar  
Maximum working pressure: 16 bar  
Maximum working temperature: +100°C  
Minimum working temperature: -20°C



Item number	Description	Connection thread	Length L	Centrum height H	Insulation included	Weight (kg per piece)
07521100025	Cooling connection, 1" M, check valve	2 x 1" M, 2 x 3/4" M	200	107	Yes	0,90
07521100032	Cooling connection, 1 1/4" M, check valve	2 x 1 1/4" M, 2 x 3/4" M	251	96	Yes	1,25

All dimensions in millimetres

Subject to technical changes and corrections without notice