

Adapters

- Solid-cast in brass
- Female thread 1/2" - 3/4" and tube end
- Key grip



Description

Adapter.

Construction

Solid-cast adapter in brass with key grip.

Model 1/2"

Body in dezincification resistant brass.

Connection female thread 1/2".

Tube end Ø15 mm.

Adapter for 5150, 5151 and 9630.

Model 3/4"

Body in dezincification resistant brass.

Tube end Ø22 mm.

Adapter for 5170, 9610 and 9620.

Maintenance

Adapters are normally maintenance-free.

Technical data

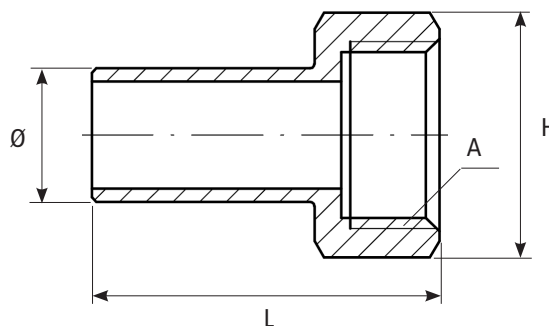
Body Dezincification resistant brass CW625N

Maximum working pressure: 16 bar

Maximum working temperature: +100°C

Minimum working temperature: +2°C

Model 1/2"



Item number	Description	Connection A	Length L	Height H	Tube end Ø	Weight (kg per piece)
0496151500	Adapter for 9630, 1/2" F x 15 tube end	1/2" F	39	27,5	15	0,04
0101572022	Adapter for 9610, 9620, 3/4" F x 22 tube end	3/4" F	46	34	22	0,1

All dimensions in millimetres

Subject to technical changes and corrections without notice